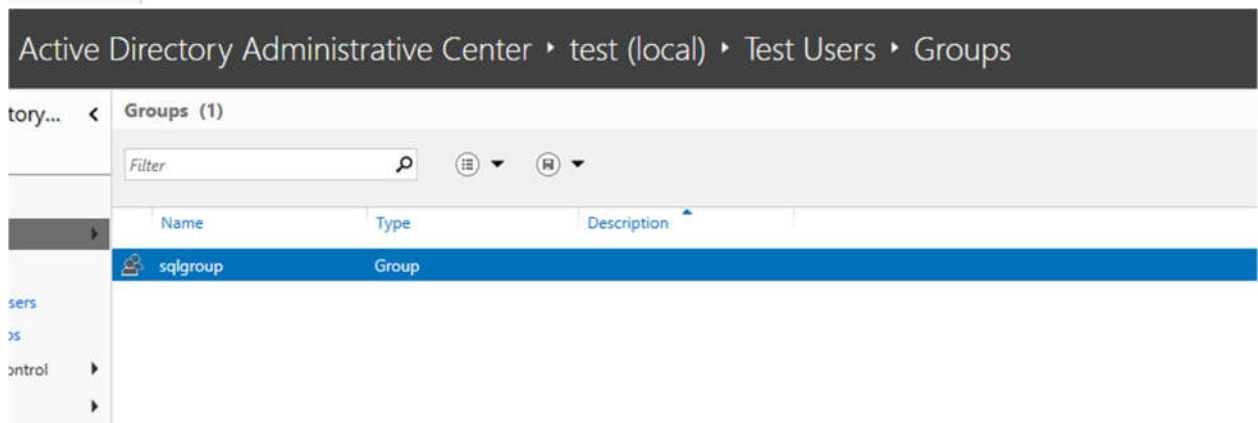
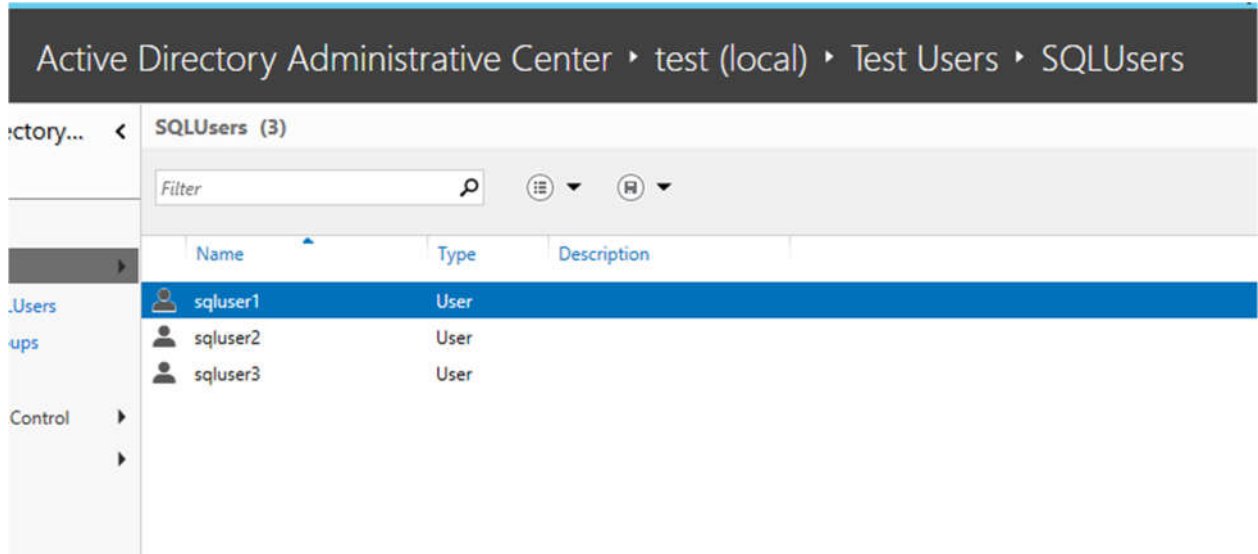
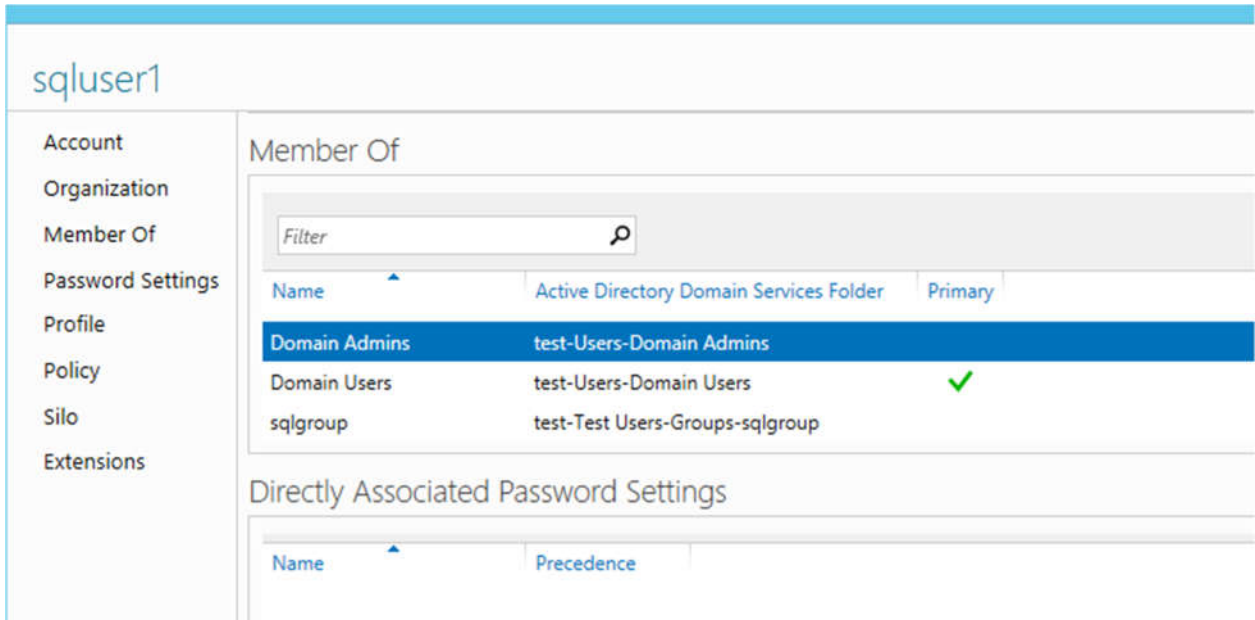


Homework 5 – Active Directory and Group Policy Objects

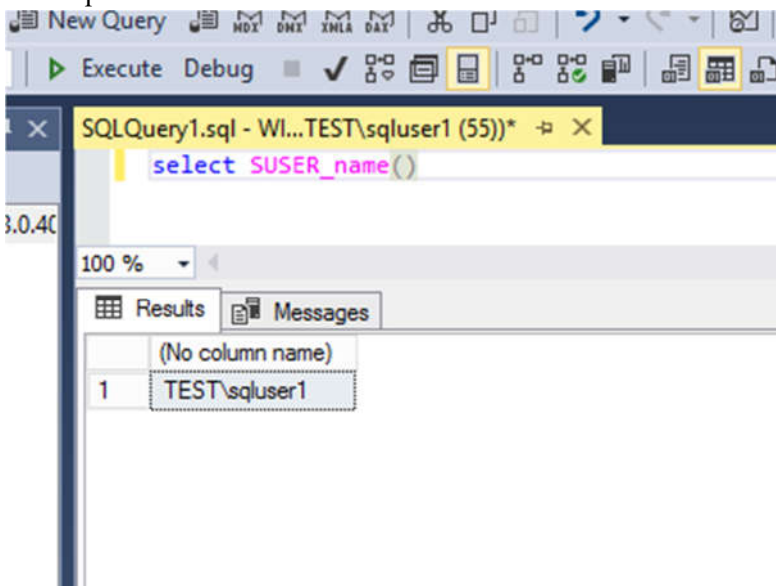
- **(Task 1)** Show in a screenshot that the three domain users (sqluser1, sqluser2, sqluser3) are created in **SQLUsers** OU. Also show in a screenshot that **sqlgroup** is created in the **Groups** OU.



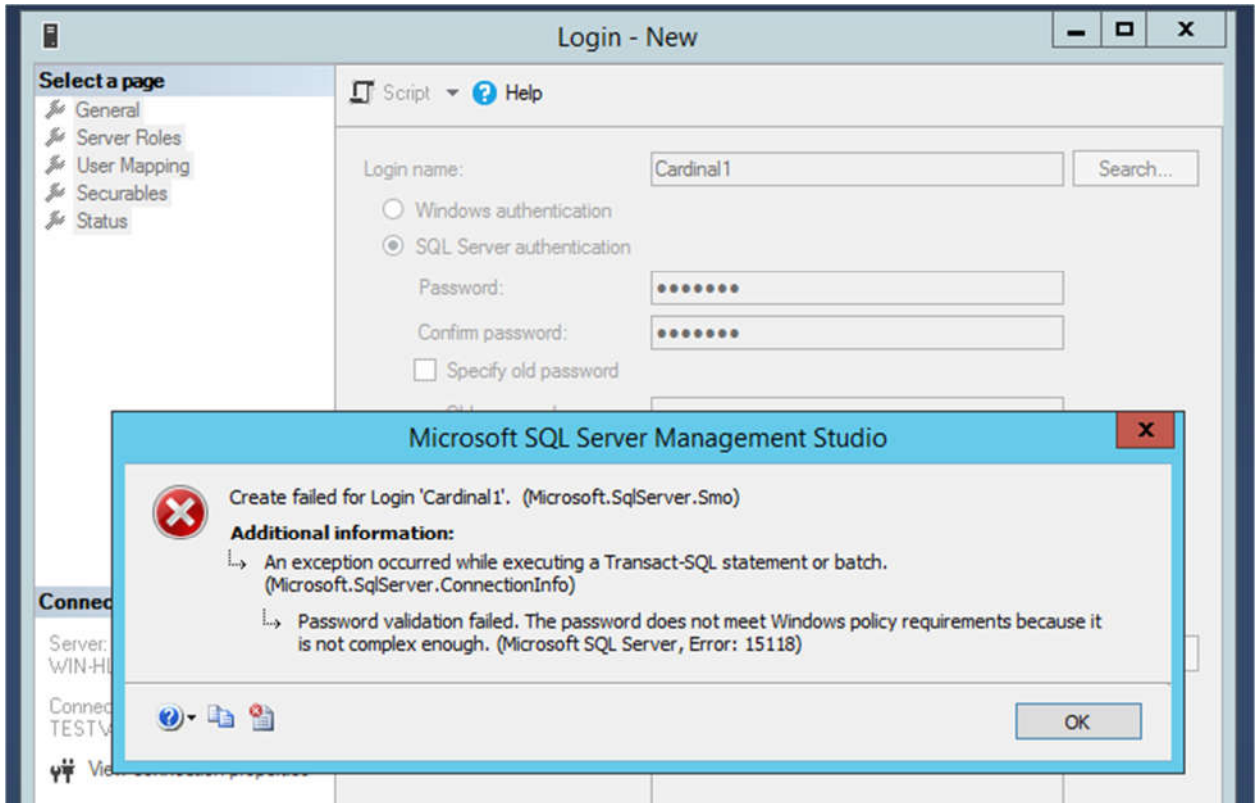
- **(Task 2)** Go to sqluser1 properties and show in a screenshot that sqluser1 is a member of **Domain Admins** and **sqlgroup**.



- **(Task 3)** Run the following query on SQL Server and show in a screenshot that you indeed logged-on with sqluser1.

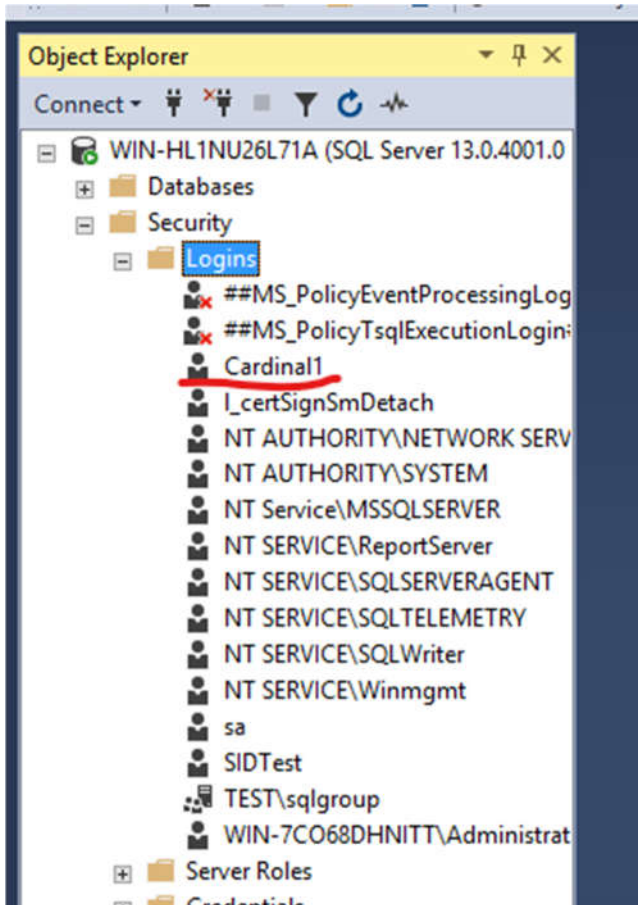


- **(Task 4)** Logon to SQL Server. Create a login “**Cardinal1**”. Select **SQL Server authentication**. Enter the password “1234567”, and show in a screenshot that the login cannot be created. Explain why?



This password cannot be created because it violates the Windows policy requirement “Password must meet complexity requirements”. 1234567 is NOT complex enough to qualify.

- **(Task 5)** Create a login “**Cardinal1**”. Select **SQL Server authentication**. Enter the password “1234567”, and show in a screenshot that the login is created. Explain why this was possible. Explain also the relationship between the GPO and the SQL Server password policy.



This login was able to be created because the password 1234567 no longer needs to meet password complexity requirements as set by the Windows Group Policy. This is because we disabled the group policy.

- **(Task 6)** Create a new AD account using the command **New-ADUser** explained on pp 12-13. Show in a screenshot that the account is indeed created (example below). Also, attach a screenshot that displays the PowerShell execution.

